

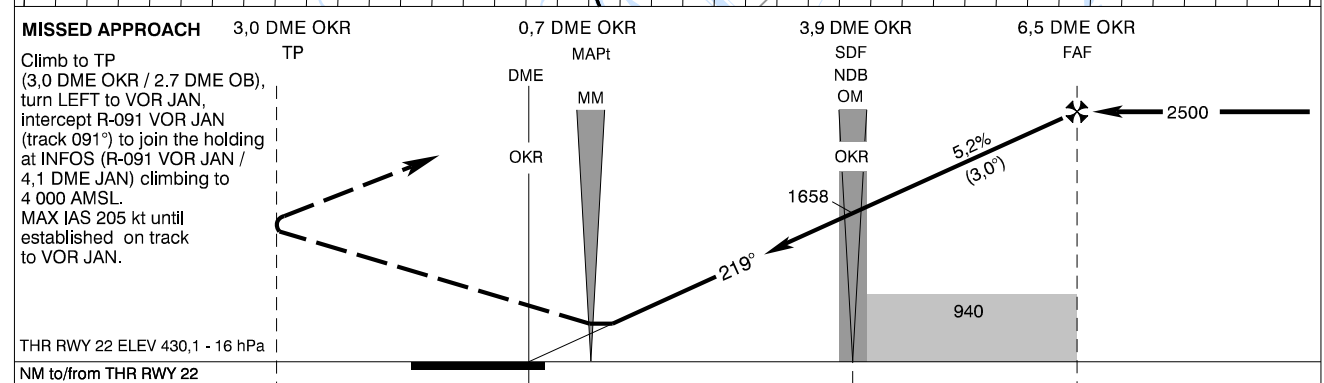
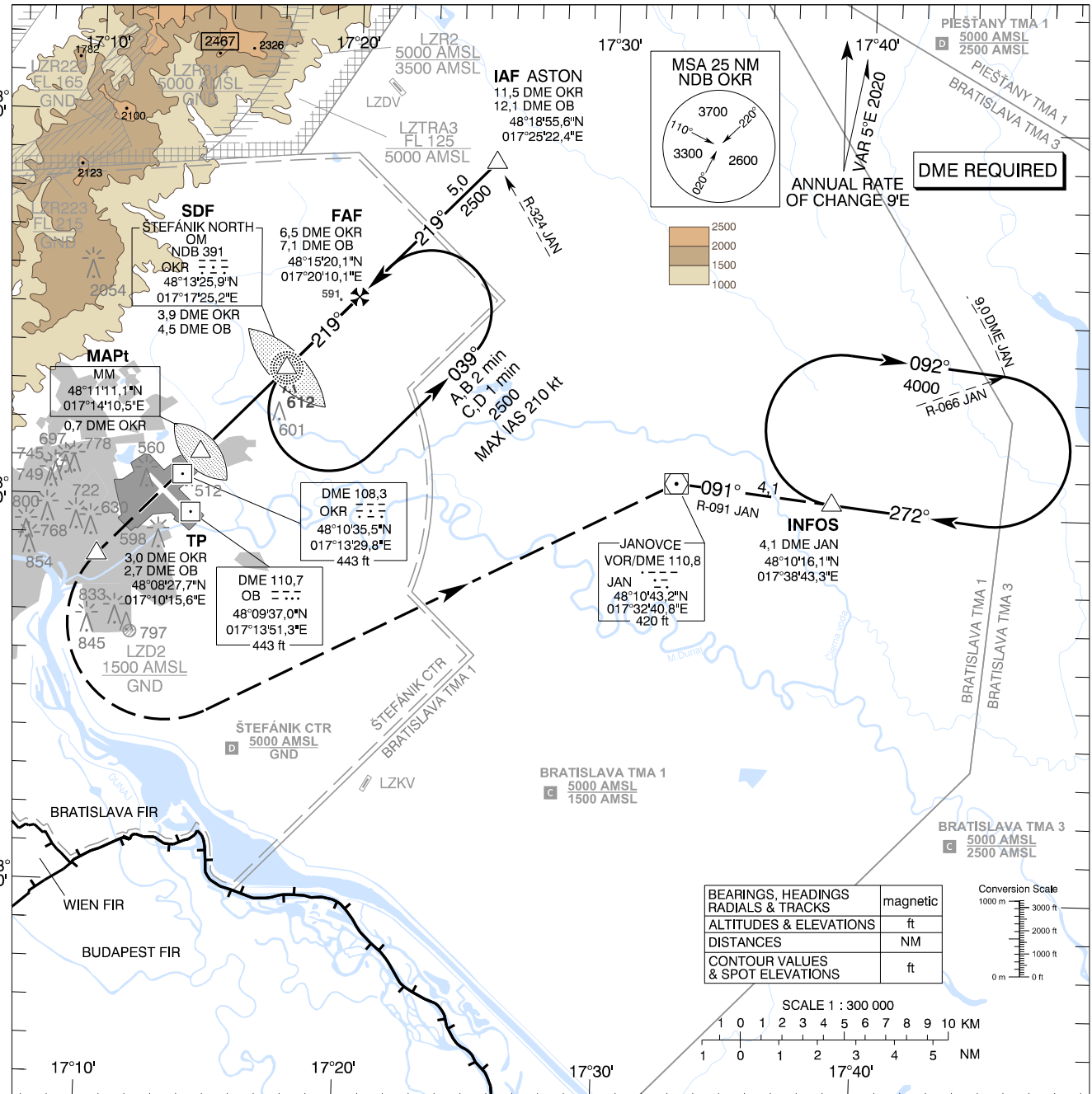
**INSTRUMENT
APPROACH
CHART - ICAO**

TRANSITION ALTITUDE
10 000 ft

AD ELEV 436 - 16 hPa
THR RWY 22 ELEV 430,1 - 16 hPa

ŠTEFÁNIK RADAR 134,925 (118,975)
ŠTEFÁNIK TOWER 118,300 (118,700)
ŠTEFÁNIK ATIS ARRIVAL 133,880

**BRATISLAVA/M. R. Štefánik (LZIB)
NDB RWY 22
ACFT CAT A/B/C/D**



OCA (OCH)		A	B	C	D
Straight - In Approach	without SDF	ft	940 (504)		
	with SDF	ft	860 (424)		
Circling		Not authorized WEST of the Airport BTN EXTD RCL 13/31 and 04/22 See the Circling Approach Chart			

DME OKR	NM	6,0	5,0	4,0	3,0	2,0
ALTITUDES	ft	2337	2018	1700	1381	1063

Ground speed	kt	70	90	100	120	140	160	180
FAF - MAPt (5,8 NM)	min:sec	4:57	3:51	3:28	2:53	2:29	2:10	1:56
Rate of descent (5,2%)	ft/min	372	478	531	637	743	849	955

Timing not authorized for defining the MAPt

CHANGES: BRATISLAVA TMA 1 and PIEŠŤANY TMA 3 added; BRATISLAVA TMA 3 added; MAG VAR; HOLDING; MSA; OCA (OCH); MISSED APPROACH; scale; LZR02, LZTRA03 renamed to LZR2, LZTRA3; obstacles; IAF

**INSTRUMENT
APPROACH
CHART - ICAO**

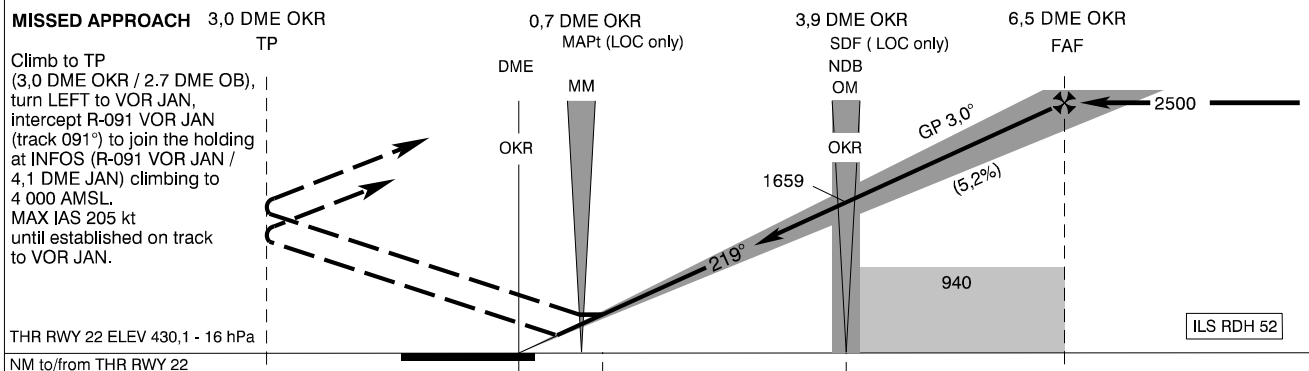
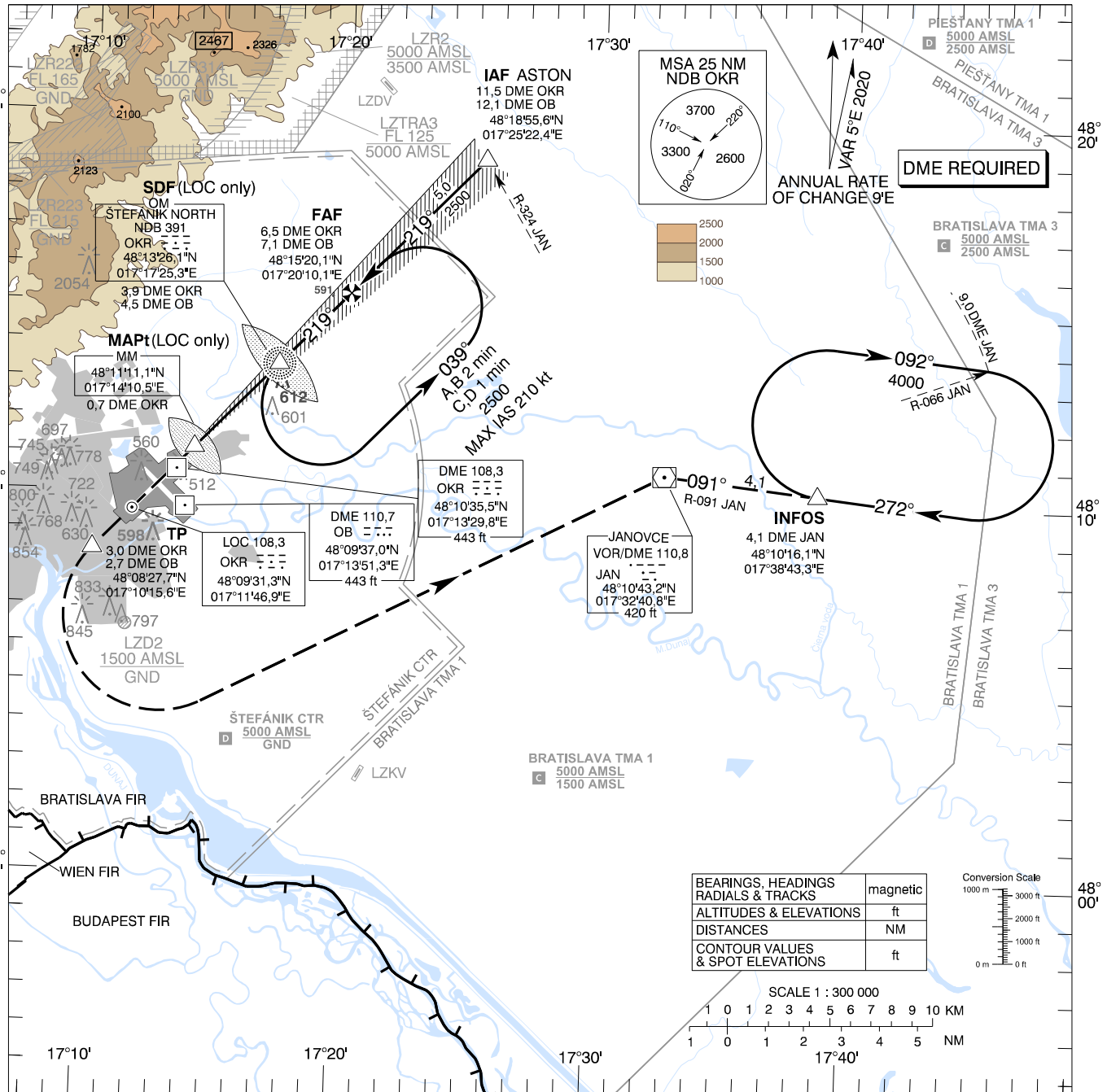
TRANSITION ALTITUDE
10 000 ft

AD ELEV 436 - 16 hPa
THR RWY 22 ELEV 430,1 - 16 hPa

ŠTEFÁNIK RADAR 134,925 (118,975)
ŠTEFÁNIK TOWER 118,300 (118,700)
ŠTEFÁNIK ATIS ARRIVAL 133,880

BRATISLAVA/M. R. ŠTEFÁNIK (LZIB)
ILS CAT I or LOC RWY 22
ACFT CAT A/B/C/D

CHANGES: BRATISLAVA TMA 1 and PIEŠŤANY TMA 3 added; MAG. VAR. VAR; HOLDING; MSA; OCA (OCH); MISSED APPROACH; LZR2, LZTRA3; scale; obstacles; IAF



		OCA (OCH)	A	B	C	D
Straight-in Approach	CAT I	ft	617 (187)	629 (199)	637 (207)	648 (218)
	LOC without SDF	ft	940 (504)			
	LOC with SDF	ft	860 (424)			
Circling	Not authorized WEST of the Airport BTN EXT D RCL 13/31 and 04/22 See the Circling Approach Chart					

DME OKR	NM	6,0	5,0	4,0	3,0	2,0
ALTITUDES	ft	2337	2018	1700	1381	1063

Ground speed	kt	70	90	100	120	140	160	180
FAF - MAPt (5,8 NM)	min:sec	4:57	3:51	3:28	2:53	2:28	2:10	1:55
Rate of descent (5,2%)	ft/min	372	478	531	637	743	849	955

Timing not authorized for defining the MAPt

INSTRUMENT APPROACH CHART - ICAO

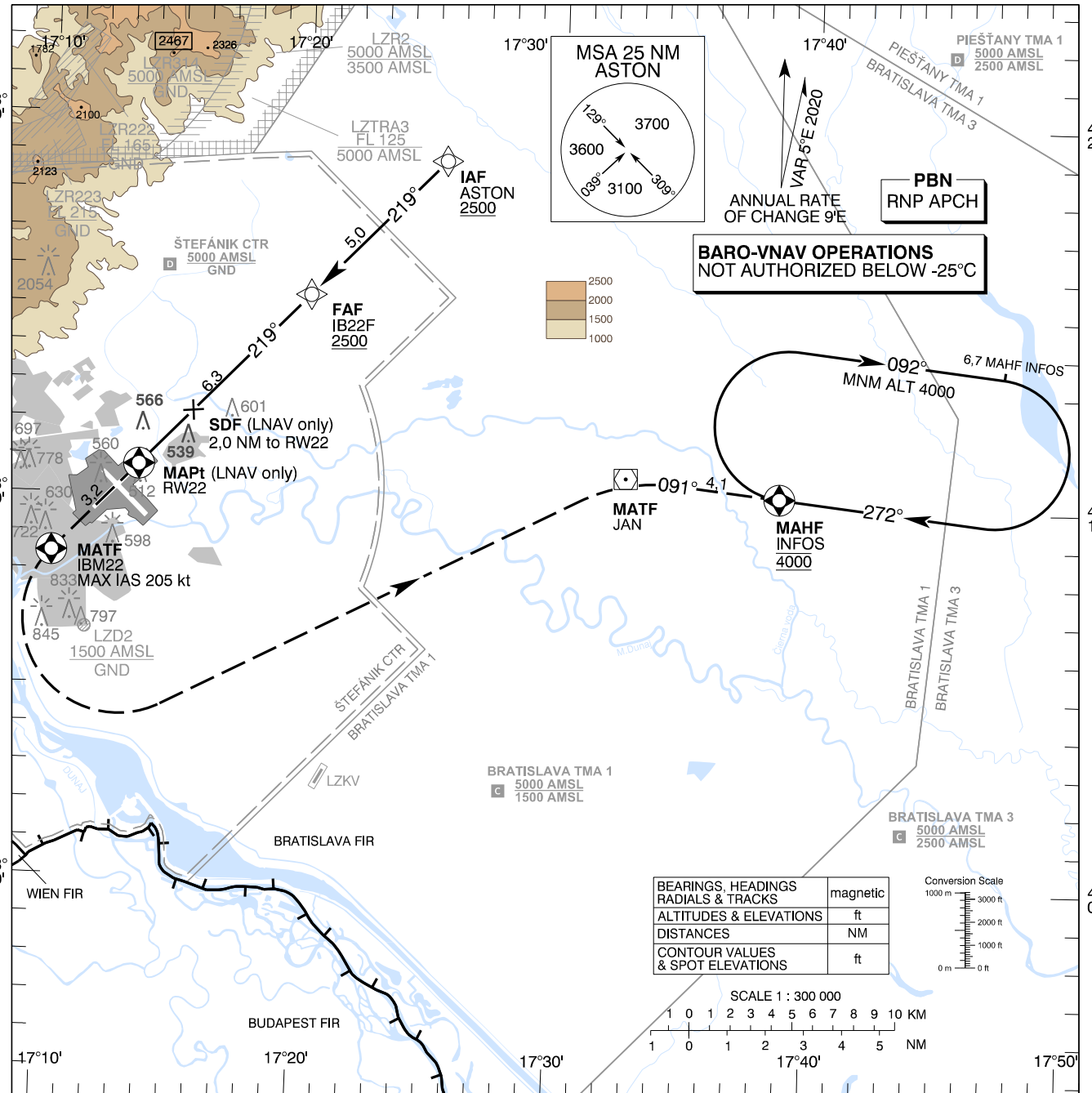
TRANSITION ALTITUDE
10 000 ft

AD ELEV 436 -16 hPa
THR RWY 22 ELEV 430,1 -16 hPa

ŠTEFÁNIK RADAR 134,925 (118,975)
ŠTEFÁNIK TOWER 118,300 (118,700)
ŠTEFÁNIK ATIS ARRIVAL 133,880

EGNOS
CH 50609
E22A

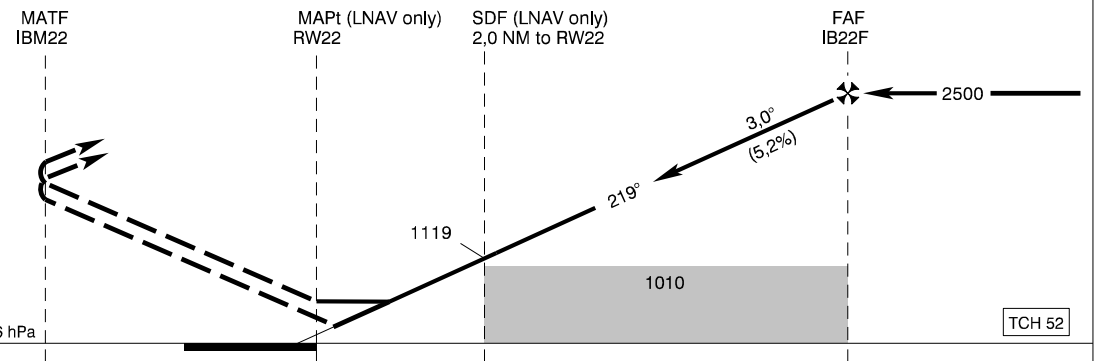
BRATISLAVA/M. R. Štefánik (LZIB)
RNP RWY 22
ACFT CAT A/B/C/D



MISSED APPROACH

Climb to IBM22, turn LEFT and proceed via JAN to INFOS climbing to 4000 AMSL and hold. MAX IAS 205 kt until established on track to JAN.

THR RWY 22 ELEV 430,1 - 16 hPa
NM to/from THR RWY 22



OCA (OCH)		A	B	C	D
Straight-In Approach	LNAV	790 (354)			
	LNAV/VNAV	674 (244)	684 (254)	690 (260)	699 (269)
	LPV	594 (164)	606 (176)	614 (184)	625 (195)
Circling		Not authorized WEST of the Airport BTN EXTD RCL 13/31 and 04/22 See the Circling Approach Chart			

Dist RW22 (THR) NM	6,0	5,0	4,0	3,0	2,0		
ALTITUDES ft	2393	2074	1756	1437	1119		
Ground speed kt	70	90	100	120	140	160	180
IB22F - RW22 (6,3 NM) min:sec	5:26	4:14	3:48	3:10	2:43	2:23	2:07
Rate of descent (5,2%) ft/min	372	478	531	637	743	849	955

Timing not authorized for defining the MAPt

CHANGES: BRATISLAVA TMA 1 and PIEŠŤANY TMA 1 reshaped; BRATISLAVA TMA 3 added; MAG VAR; HOLDING; MISSED APPROACH; OCA (OCH); LZR2, LZTRA3 renamed to LZR2, LZTRA3; obstacles; scale

Instrument Approach Procedure Coding Table: Bratislava/M. R. Štefánik RNP RWY 22

Path Terminator	Waypoint				Course / Track MAG (True)	DIST	Turn Direction	Constraints		Navigation Specification
	Identifier	Type	Flyover	Coordinates				Level	Speed	
IF	ASTON	IAF	NO	48°18'55,60"N 017°25'22,39"E	-	-	-	A2500+	-	RNP APCH
TF	IB22F	FAF	NO	48°15'20,09"N 017°20'10,10"E	219° (224,1°)	5,0 NM	-	A2500+	-	RNP APCH
TF	RW22	MAPt	YES	48°10'46,56"N 017°13'35,27"E	219° (224,0°)	6,3 NM	-	-	-	RNP APCH
TF	IBM22	MATF	YES	48°08'27,75"N 017°10'15,57"E	219° (223,9°)	3,2 NM	-	-	K205-	RNP APCH
DF	JAN	MATF	NO	48°10'43,17"N 017°32'40,76"E	-	-	LEFT	-	-	RNP APCH
TF	INFOS	MAHF	YES	48°10'16,10"N 017°38'43,31"E	091° (096,3°)	4,1 NM	RIGHT	A4000	-	RNP APCH
RNAV Holding										
Holding Point	Inbound Track MAG (True)	Turn Direction	MAX IAS	Minimum Holding Altitude	Time	DIST MAHF	Remarks			
INFOS	272° (276,5°)	RIGHT	-	A4000	-	6,7 NM	-			

SBAS FAS Data Block Coding Table Bratislava/M.R. Štefánik RNP RWY 22

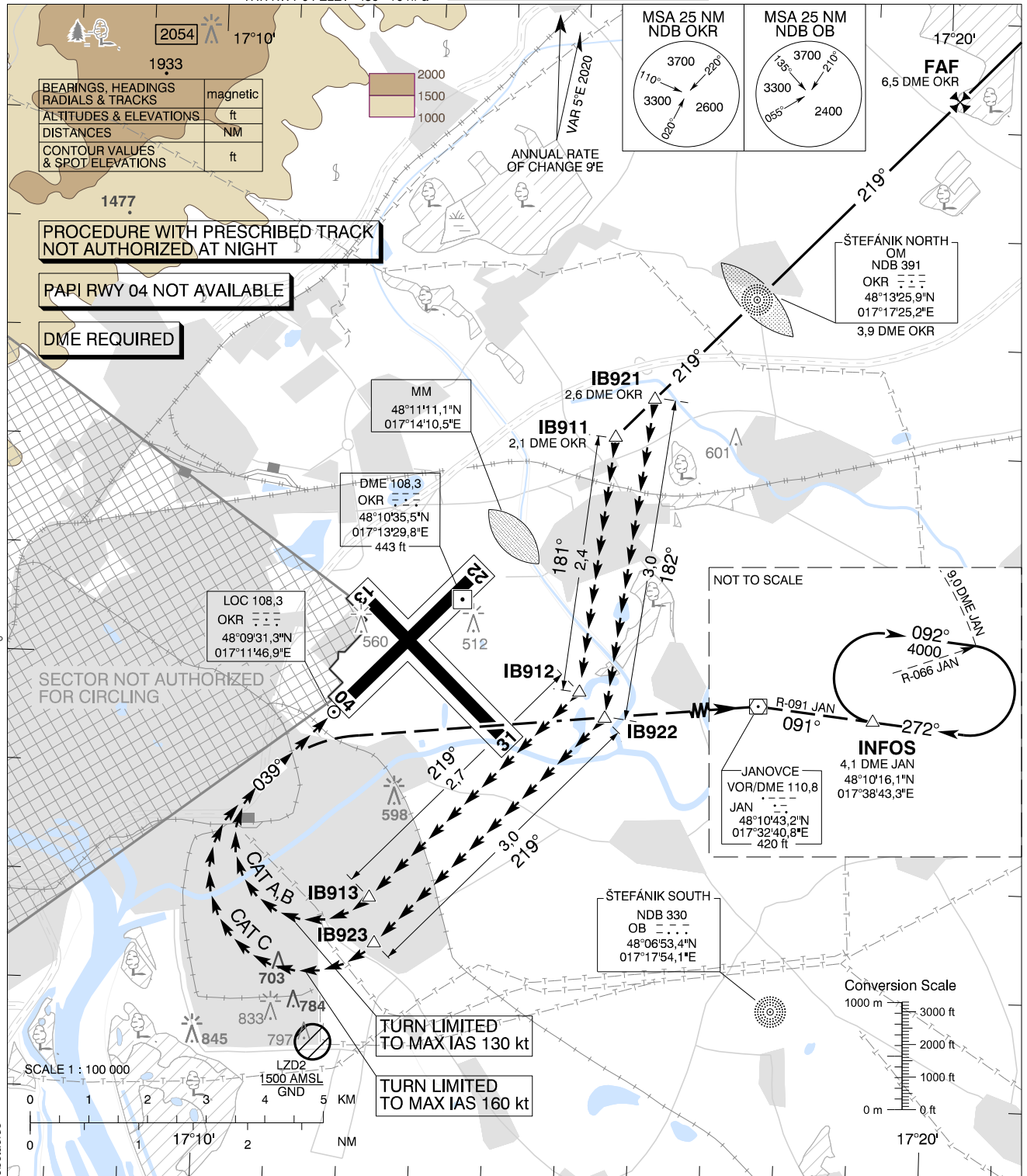
Input data	
Operation Type	0
SBAS Provider	1 (EGNOS)
Airport Identifier	LZIB
Runway	22
Runway Letter	0 (None)
Approach Performance Designator	0
Route Indicator	
Reference Path Data Selector	0
Reference Path Identifier	E22A
LTP/FTP Latitude	481046.5550N
LTP/FTP Longitude	0171335.2675E
LTP/FTP Ellipsoidal Height (metres)	174.7
FPAP Latitude	480938.3950N
Delta FPAP Latitude (seconds)	-68.1600
FPAP Longitude	0171157.1505E
Delta FPAP Longitude (seconds)	-98.1170
Threshold Crossing Height	15.7
TCH Units Selector	1 (meters)
Glidepath Angle (degrees)	3.00
Course Width (metres)	105.00
Length Offset (metres)	24
HAL (metres)	40.0
VAL (metres)	35.0
Output data	
Data Block	10 02 09 1A 0C 16 00 00 01 32 32 05 36 2B AD 14 47 8E 64 07 D3 1A 80 EB FD 76 01 FD 3A 81 2C 01 64 03 C8 AF 13 21 D9 F8
Calculated CRC Value	1321D9F8
Required Additional Data	
ICAO Code	LZ
LTP/FTP Orthometric Height (metres)	131.1

**CIRCLING
APPROACH
CHART**

TRANSITION ALTITUDE
10 000 ft
AD ELEV 436 - 16 hPa
THR RWY 04 ELEV 436 - 16 hPa

ŠTEFÁNIK RADAR 134,925 (118,975)
ŠTEFÁNIK TOWER 118,300 (118,700)
ŠTEFÁNIK ATIS ARRIVAL 133,880

BRATISLAVA/M. R. Štefánik (LZIB)
RWY 22 → 04
ACFT CAT A/B/C/D



MISSED APPROACH

Proceed with RIGHT turn to VOR JAN, intercept R-091 VOR JAN (track 091°) to join the holding at INFOS (R-091 VOR JAN / 4,1 DME JAN) climbing to 4 000 AMSL. MAX IAS as prescribed for relevant ACFT CAT until established on track to VOR JAN.

WARNING

In case of missed approach before leaving final approach track, follow instrument missed approach procedure for RWY 22.

PROCEDURE

Execute a published instrument approach procedure to circling OCA(H) for relevant ACFT CAT, proceed VISUALLY approximately onto tracks and distances given on the chart above.

OCA (OCH)		A	B	C	D
WITHOUT PRESCRIBED TRACK	ft	900 (464)	1000 (564)	1970 (1534)	2450 (2014)
WITH PRESCRIBED TRACK	ft	1080 (644)		1240 (804)	—
MNM VISIBILITY	m	1900	2800	3700	4600

	IB911	IB912	IB913
CAT A, B	48°12'07,6"N 017°15'32,1"E	48°09'46,4"N 017°15'08,7"E	48°07'49,7"N 017°12'20,7"E
	11,6 DME JAN R-272 JAN	11,8 DME JAN R-261 JAN	13,9 DME JAN R-253 JAN
	IB921	IB922	IB923
CAT C	48°12'29,3"N 017°16'03,4"E	48°09'32,5"N 017°15'30,2"E	48°07'24,5"N 017°12'25,9"E
	11,3 DME JAN R-274 JAN	11,6 DME JAN R-259 JAN	14,0 DME JAN R-251 JAN

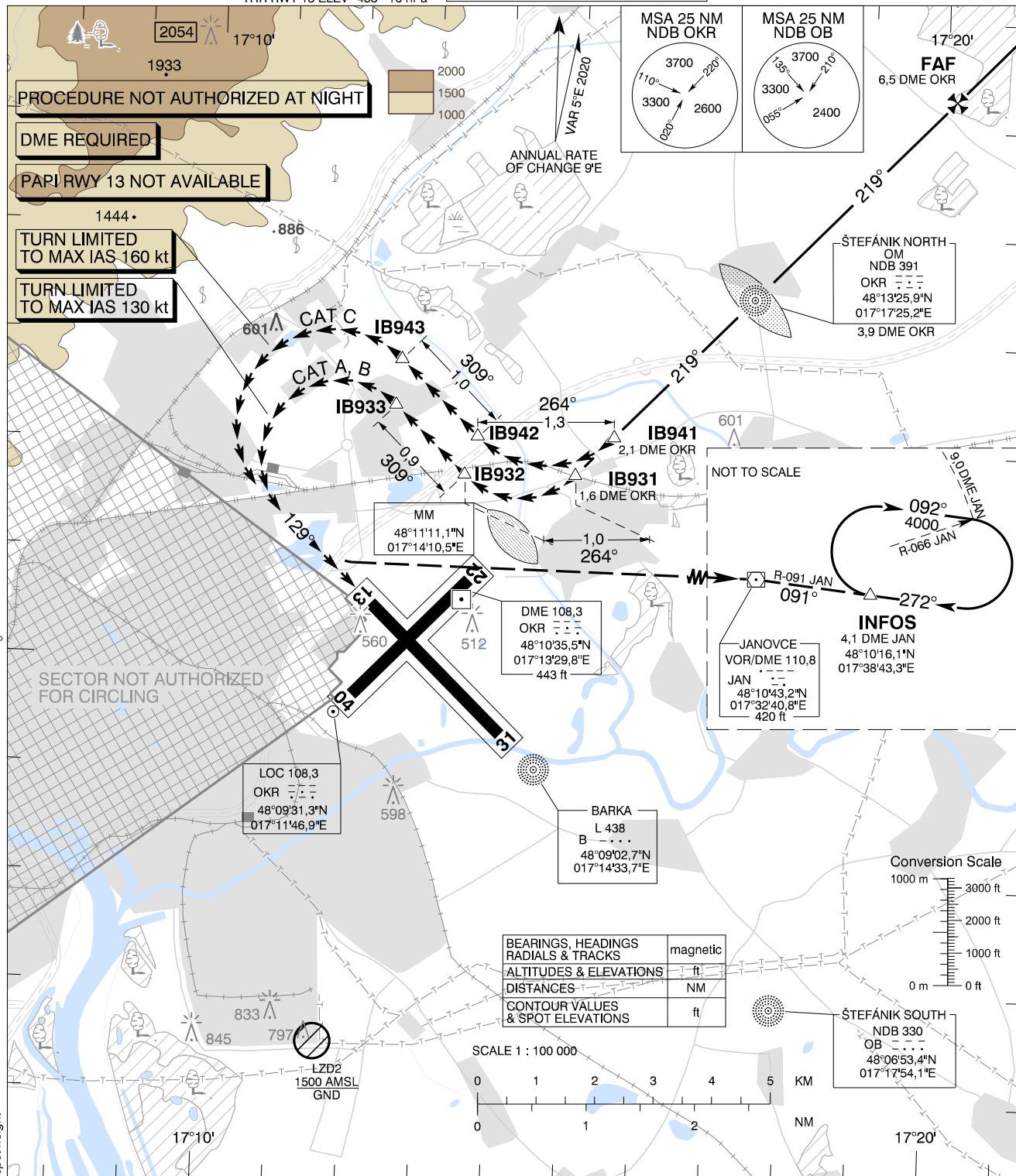
CHANGES: MAG VAR; MSA; MISSED APPROACH; HOLDING; obstacles

**CIRCLING
APPROACH
CHART**

TRANSITION ALTITUDE
10 000 ft
AD ELEV 436 - 16 hPa
THR RWY 13 ELEV 433 - 16 hPa

ŠTEFÁNIK RADAR 134,925 (118,975)
ŠTEFÁNIK TOWER 118,300 (118,700)
ŠTEFÁNIK ATIS ARRIVAL 133,880

**BRATISLAVA/M. R. ŠTEFÁNIK (LZIB)
RWY 22 → 13
ACFT CAT A/B/C**



MISSED APPROACH

Proceed with LEFT turn to VOR JAN, intercept R-091 VOR JAN (track 091°) to join the holding at INFOS (R-091 VOR JAN / 4,1 DME JAN) climbing to 4 000 AMSL.
MAX IAS as prescribed for relevant ACFT CAT until established on track to VOR JAN.

WARNING

In case of missed approach before leaving final approach track, follow instrument missed approach procedure for RWY 22.

PROCEDURE

Execute a published instrument approach procedure to circling OCA(H) for relevant ACFT CAT, proceed VISUALLY approximately onto tracks and distances given on the chart above.

OCA (OCH)		A	B	C
WITH PRESCRIBED TRACK	ft	930 (494)		1350 (914)
MNM VISIBILITY	m	1900	2800	3700

	IB931	IB932	IB933
CAT A, B	48°11'45,9"N 017°15'00,8"E	48°11'44,8"N 017°13'29,1"E	48°12'22,3"N 017°12'30,9"E
	11,9 DME JAN R-270 JAN	12,9 DME JAN R-270 JAN	13,6 DME JAN R-272 JAN
CAT C	48°12'07,5"N 017°15'32,0"E	48°12'06,2"N 017°13'39,1"E	48°12'47,6"N 017°12'34,7"E
	11,6 DME JAN R-272 JAN	12,8 DME JAN R-271 JAN	13,6 DME JAN R-274 JAN

CHANGES: MAG VAR; MSA; MISSED APPROACH; HOLDING; SPOT HEIGHT

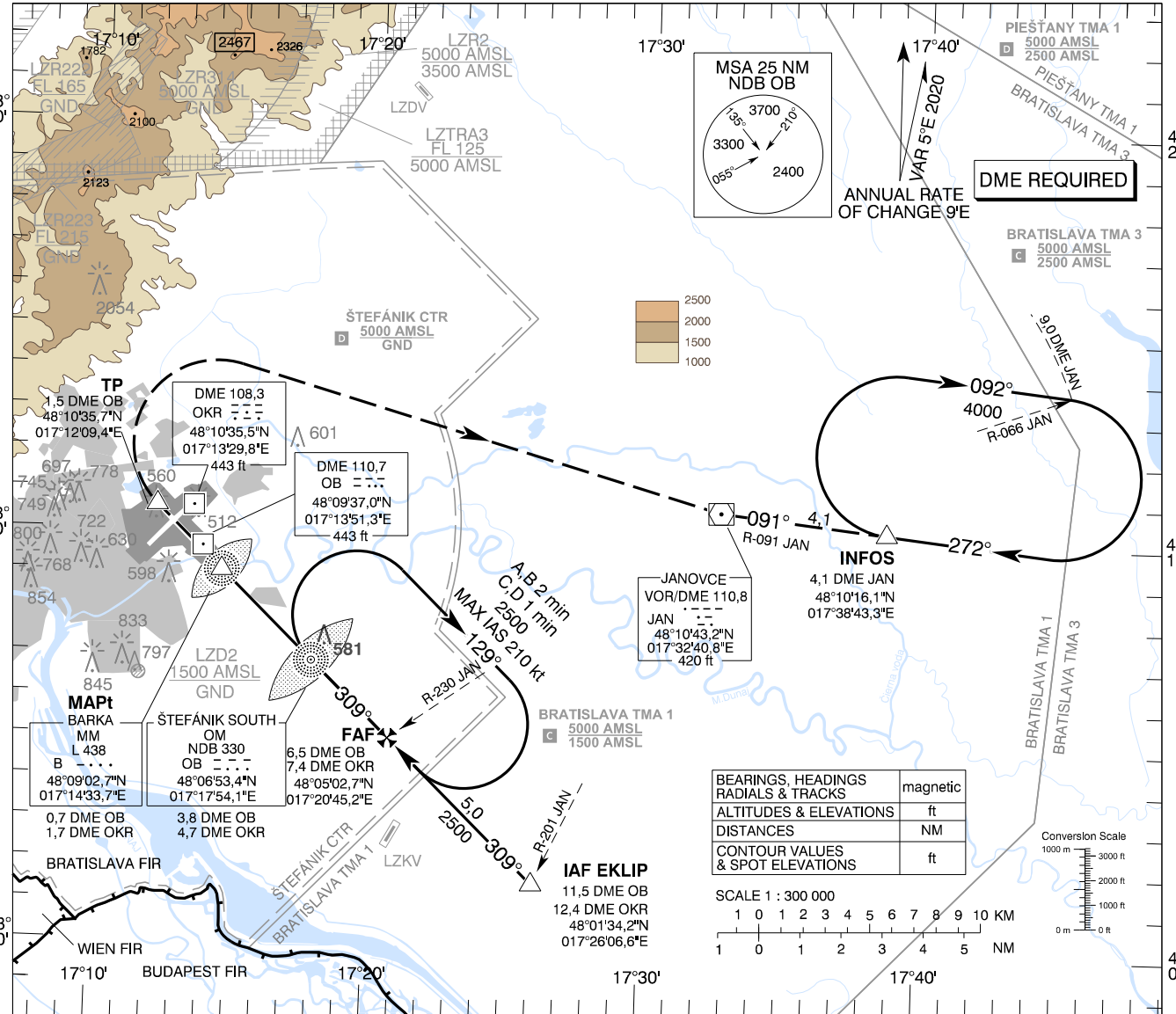
**INSTRUMENT
APPROACH
CHART - ICAO**

TRANSITION ALTITUDE
10 000 ft

AD ELEV 436 -16 hPa
THR RWY 31 ELEV 433,7 -16 hPa

ŠTEFÁNIK RADAR 134,925 (118,975)
ŠTEFÁNIK TOWER 118,300 (118,700)
ŠTEFÁNIK ATIS ARRIVAL 133,880

BRATISLAVA/M. R. ŠTEFÁNIK (LZIB)
NDB RWY 31
ACFT CAT A/B/C/D



MISSED APPROACH

Climb to TP (1,5 DME OB), turn RIGHT to VOR JAN, intercept R-091 VOR JAN (track 091°) to join the holding at INFOs (R-091 VOR JAN / 4,1 DME JAN) climbing to 4000 AMSL. MAX IAS 185 kt until established on track to VOR JAN.

ALTERNATE MISSED APPROACH IN CASE OF DME OB UNSERVICEABLE
At MAPt turn RIGHT to VOR JAN, intercept R-091 VOR JAN (track 091°) to join the holding at INFOs (R-091 VOR JAN / 4,1 DME JAN) climbing to 4000 AMSL. MAX IAS 185 kt until established on track to VOR JAN.

THR RWY 31 ELEV 433,7 - 16 hPa

NM to/from THR RWY 31

OCA (OCH)		A	B	C	D
Straight-in Approach	ft	830 (394)			
Circling		Not authorized WEST of the Airport BTN EXTD RCL 13/31 and 04/22 See the Circling Approach Chart			

DME OB	NM	6,0	5,0	4,0	3,0	2,0
ALTITUDES	ft	2340	2021	1703	1384	1066

Ground speed	kt	70	90	100	120	140	160	180
FAF - MAPt (5,8 NM)	min:sec	4:57	3:51	3:28	2:53	2:28	2:10	1:55
Rate of descent (5,2%)	ft/min	372	478	531	637	743	849	955

Timing not authorized for defining the MAPt

CHANGES: MAG. VAR; HOLDING; MISSED APPROACH; OCA (OCH); BRATISLAVA TMA 1 and PIEŠŤANY TMA 1 reshaped; BRATISLAVA TMA 3 added; LZR2, LZTRA3 renamed to LZR2, LZTRA3; scale; obstacles

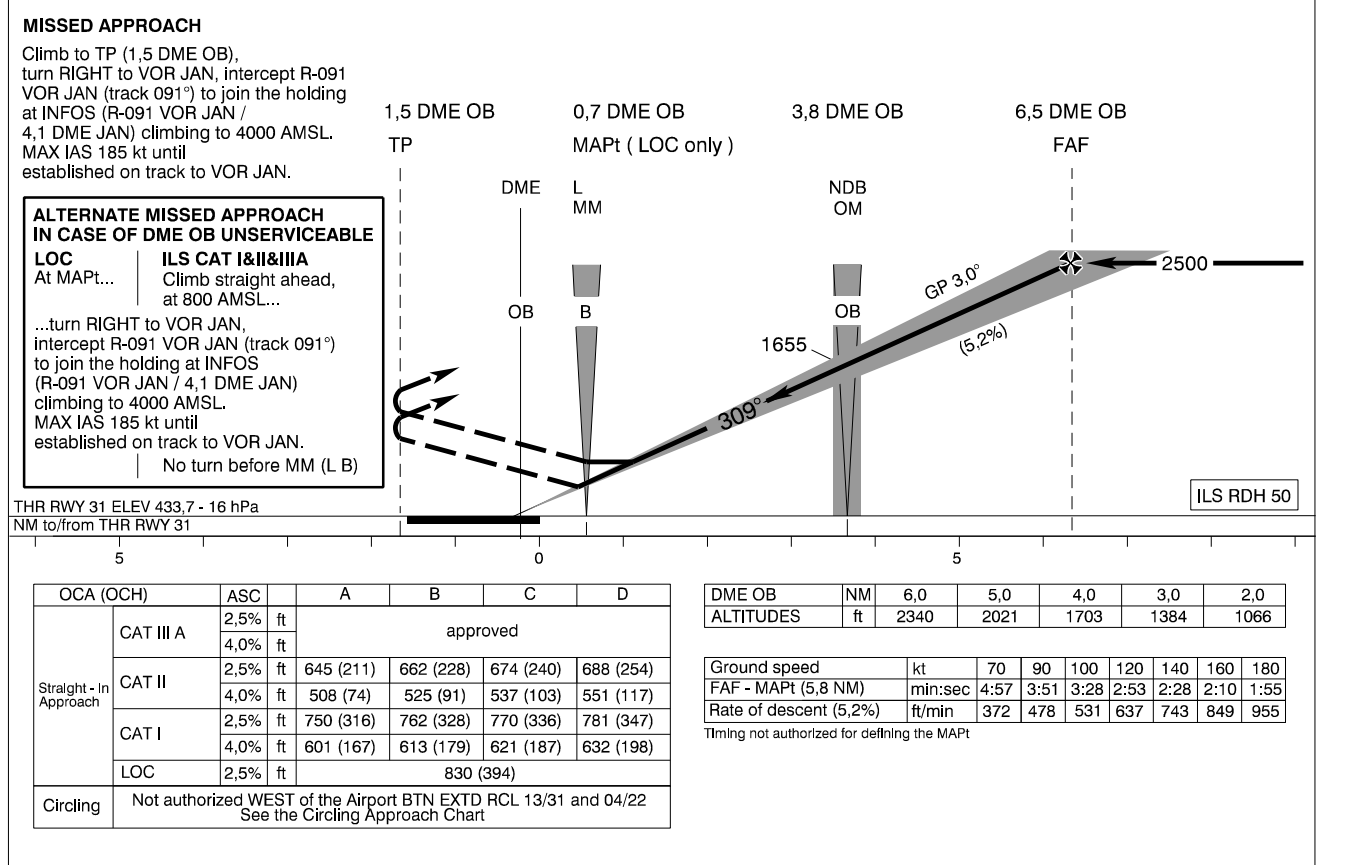
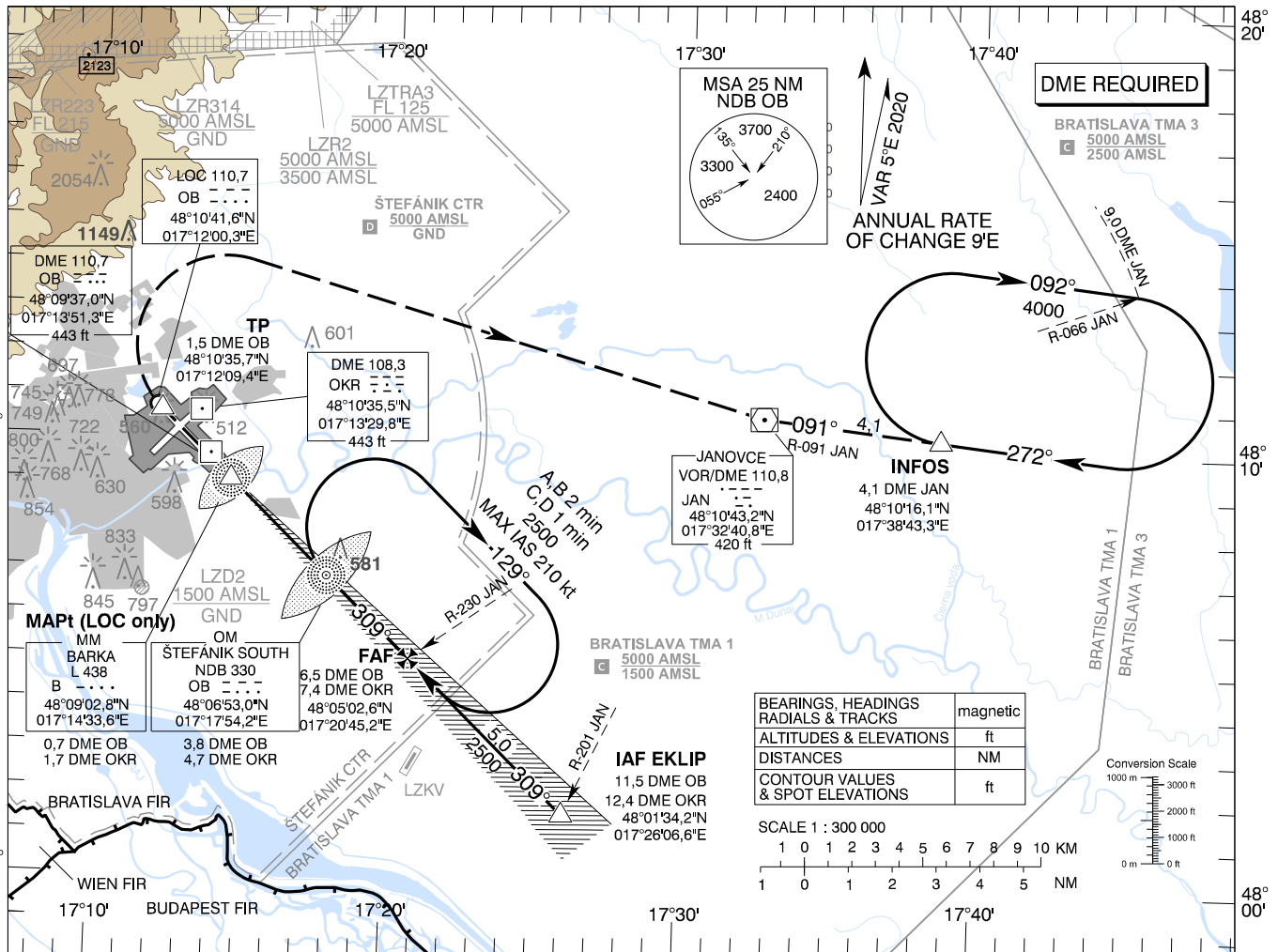
**INSTRUMENT
APPROACH
CHART - ICAO**

TRANSITION ALTITUDE
10 000 ft

AD ELEV 436 -16 hPa
THR RWY 31 ELEV 433,7 -16 hPa

ŠTEFÁNIK RADAR 134,925 (118,975)
ŠTEFÁNIK TOWER 118,300 (118,700)
ŠTEFÁNIK ATIS ARRIVAL 133,880

**BRATISLAVA/M. R. Štefánik (LZIB)
ILS CAT I&II&III or LOC RWY 31
ACFT CAT A/B/C/D**



CHANGES: MAG VAR; HOLDING; MISSED APPROACH; OCA (OCH); BRATISLAVA TMA 1 reshaped; BRATISLAVA TMA 3 added; LZR02, LZTRA03 renamed to LZR2, LZTRA3

INSTRUMENT APPROACH CHART - ICAO

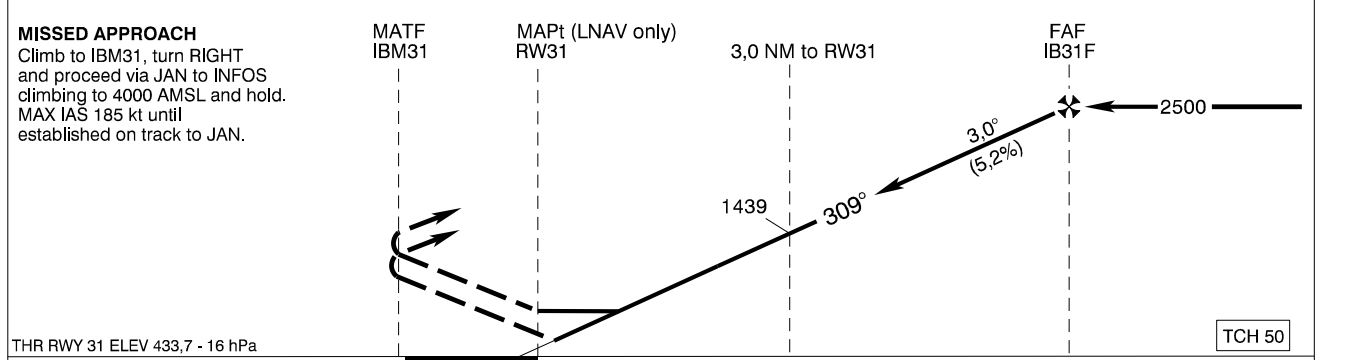
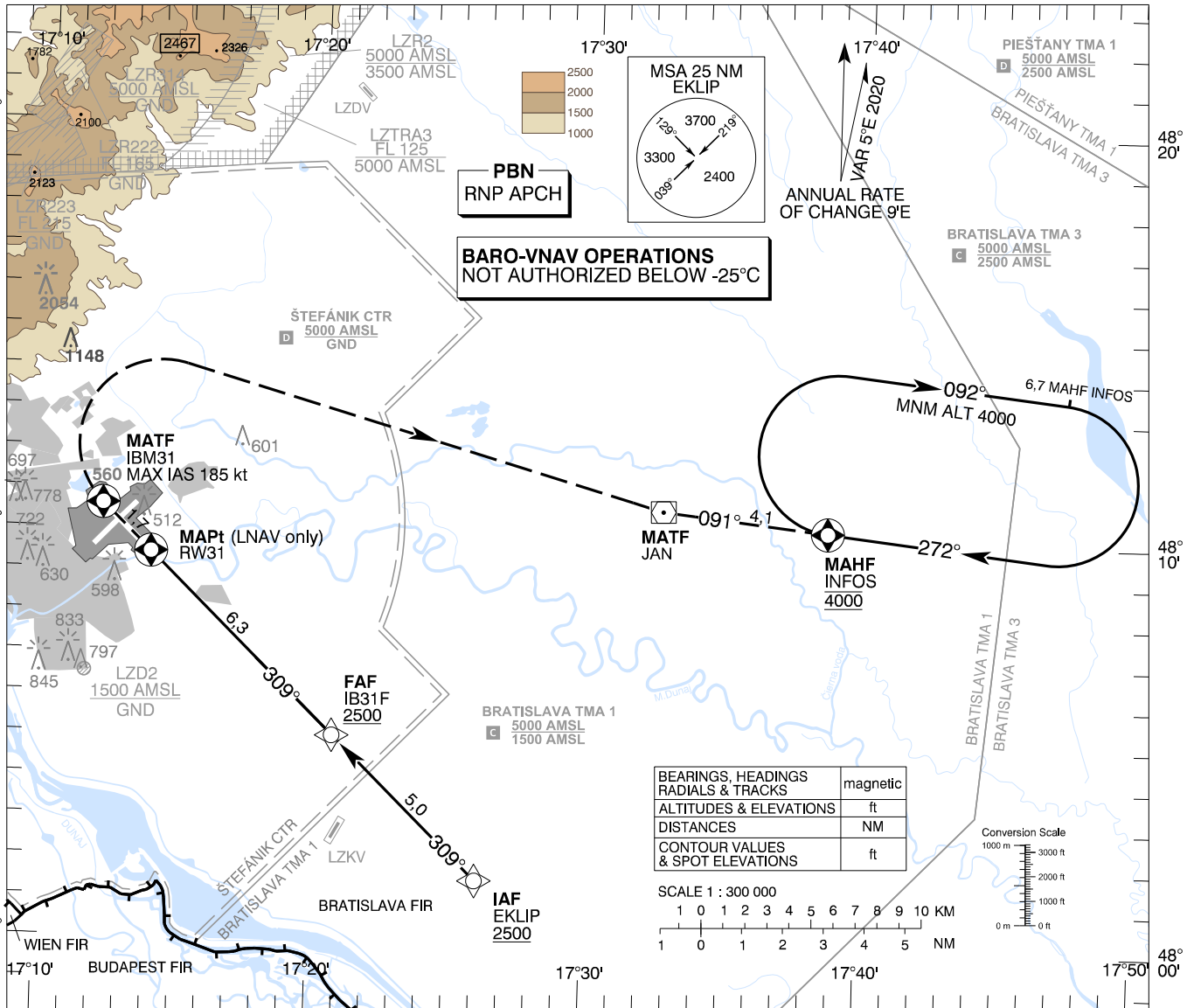
TRANSITION ALTITUDE 10 000 ft
AD ELEV 436 - 16 hPa
THR RWY 31 ELEV 433,7 - 16 hPa

ŠTEFÁNIK RADAR 134,925 (118,975)
ŠTEFÁNIK TOWER 118,300 (118,700)
ŠTEFÁNIK ATIS ARRIVAL 133,880

EGNOS CH 57702
E31A

BRATISLAVA/M. R. Štefánik (LZIB) RNP RWY 31
ACFT CAT A/B/C/D

CHANGES: MAG VAR; HOLDING; MISSED APPROACH; OCA (OCH); BRATISLAVA TMA 1 and PIEŠŤANY TMA 1 restaged; BRATISLAVA TMA 3 added; LZTR02, LZTR03 renamed to LZR2, LZTR03



OCA (OCH)		ASC	A	B	C	D
Straight - In Approach	LNAV	2,5% ft	1330 (894)			
		4,0% ft	870 (434)			
	LNAV/VNAV	2,5% ft	1116 (682)	1128 (694)	1136 (702)	1147 (713)
		4,0% ft	741 (307)	753 (319)	761 (327)	772 (338)
LPV	2,5% ft	748 (314)	760 (326)	768 (334)	779 (345)	
	4,0% ft	596 (162)	608 (174)	616 (182)	627 (193)	
Circling	Not authorized WEST of the Airport BTN EXT D RCL 13/31 and 04/22 See the Circling Approach Chart					

Dist RW31 (THR) NM	6,0	5,0	4,0	3,0	2,0
ALTITUDES ft	2394	2076	1757	1439	1121

Ground speed	kt	70	90	100	120	140	160	180
IB31F - RW31 (6,3 NM)	min:sec	5:26	4:13	3:48	3:10	2:43	2:22	2:07
Rate of descent (5,2%)	ft/min	372	478	531	637	743	849	955

Timing not authorized for defining the MAPt

Instrument Approach Procedure Coding Table: Bratislava/M. R. Štefánik RNP RWY 31

Path Terminator	Waypoint				Course / Track MAG (True)	DIST	Turn Direction	Constraints		Navigation Specification
	Identifier	Type	Flyover	Coordinates				Level	Speed	
IF	EKLIP	IAF	NO	48°01'34,19"N 017°26'06,60"E	-	-	-	A2500+	-	RNP APCH
TF	IB31F	FAF	NO	48°05'02,65"N 017°20'45,19"E	309° (314,1°)	5,0 NM	-	A2500+	-	RNP APCH
TF	RW31	MAPt	YES	48°09'26,29"N 017°13'57,10"E	309° (314,0°)	6,3 NM	-	-	-	RNP APCH
TF	IBM31	MATF	YES	48°10'35,68"N 017°12'09,39"E	309° (313,9°)	1,7 NM	-	-	K185-	RNP APCH
DF	JAN	MATF	NO	48°10'43,17"N 017°32'40,76"E	-	-	RIGHT	-	-	RNP APCH
TF	INFOS	MAHF	YES	48°10'16,10"N 017°38'43,31"E	091° (096,3°)	4,1 NM	LEFT	A4000	-	RNP APCH
RNAV Holding										
Holding Point	Inbound Track MAG (True)	Turn Direction	MAX IAS	Minimum Holding Altitude	Time	DIST MAHF	Remarks			
INFOS	272° (276,5°)	RIGHT	-	A4000	-	6,7 NM	-			

SBAS FAS Data Block Coding Table Bratislava/M.R. Štefánik RNP RWY 31

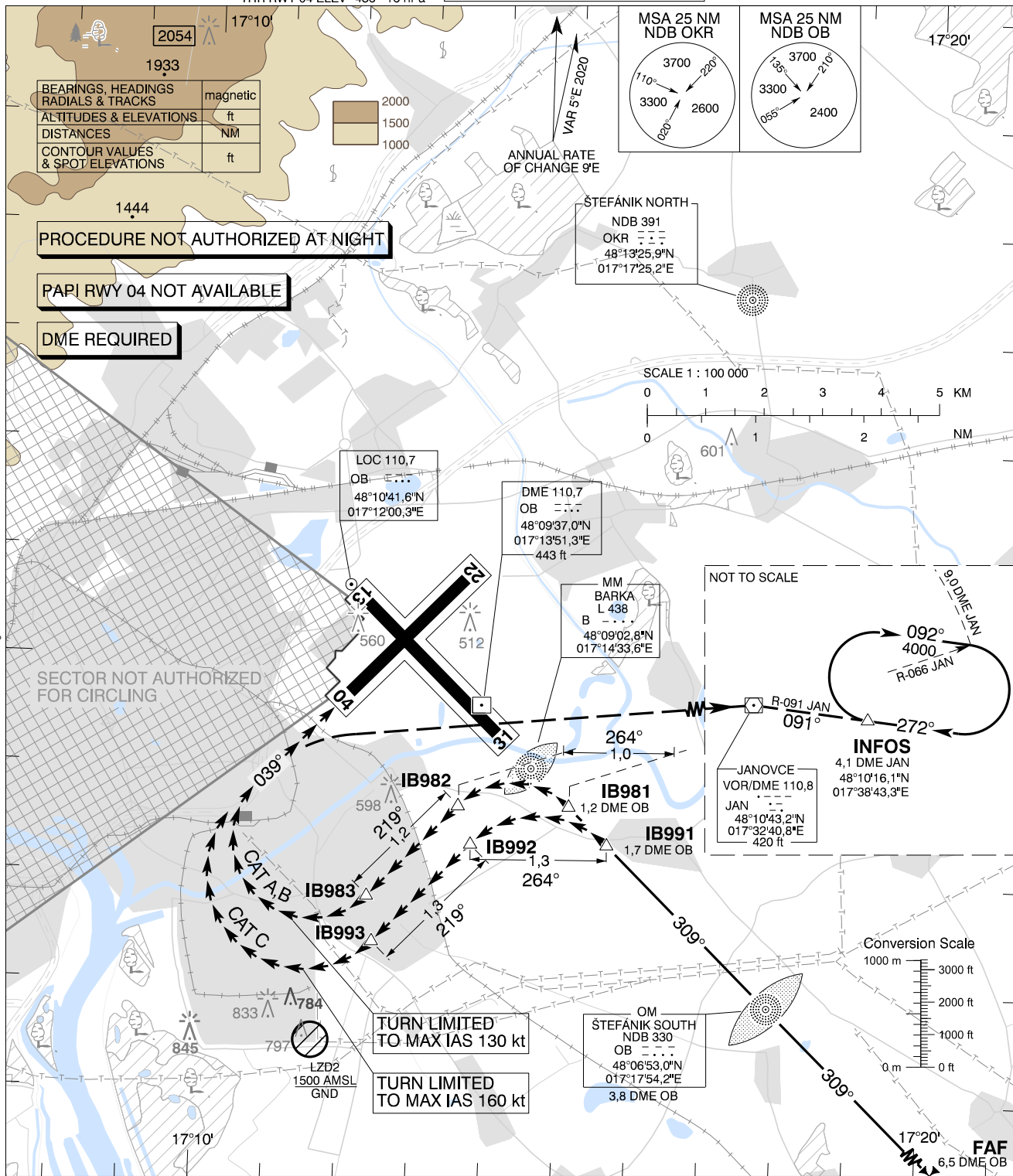
Input data	
Operation Type	0
SBAS Provider	1 (EGNOS)
Airport Identifier	LZIB
Runway	31
Runway Letter	0 (None)
Approach Performance Designator	0
Route Indicator	
Reference Path Data Selector	0
Reference Path Identifier	E31A
LTP/FTP Latitude	480926.2850N
LTP/FTP Longitude	0171357.1020E
LTP/FTP Ellipsoidal Height (metres)	175.8
FPAP Latitude	481034.7090N
Delta FPAP Latitude (seconds)	68.4240
FPAP Longitude	0171210.8935E
Delta FPAP Longitude (seconds)	-106.2085
Threshold Crossing Height	15.2
TCH Units Selector	1 (meters)
Glidepath Angle (degrees)	3.00
Course Width (metres)	105.00
Length Offset (metres)	104
HAL (metres)	40.0
VAL (metres)	35.0
Output data	
Data Block	10 02 09 1A 0C 1F 00 00 01 31 33 05 1A B8 AA 14 DC 38 65 07 DE 1A 90 16 02 3F C2 FC 30 81 2C 01 64 0D C8 AF 8E D2 4D 19
Calculated CRC Value	8ED24D19
Required Additional Data	
ICAO Code	LZ
LTP/FTP Orthometric Height (metres)	132.2

**CIRCLING
APPROACH
CHART**

TRANSITION ALTITUDE
10 000 ft
AD ELEV 436 - 16 hPa
THR RWY 04 ELEV 436 - 16 hPa

ŠTEFÁNIK RADAR 134,925 (118,975)
ŠTEFÁNIK TOWER 118,300 (118,700)
ŠTEFÁNIK ATIS ARRIVAL 133,880

BRATISLAVA/M. R. Štefánik (LZIB)
RWY 31 → 04
ACFT CAT A/B/C



MISSED APPROACH

Proceed with RIGHT turn to VOR JAN, intercept R-091 VOR JAN (track 091°) to join the holding at INFOS (R-091 VOR JAN / 4,1 DME JAN) climbing to 4 000 AMSL. MAX IAS as prescribed for relevant ACFT CAT until established on track to VOR JAN.

WARNING

In case of missed approach before leaving final approach track, follow instrument missed approach procedure for RWY 31.

PROCEDURE

Execute a published instrument approach procedure to circling OCA(H) for relevant ACFT CAT, proceed VISUALLY approximately onto tracks and distances given on the chart above.

OCA (OCH)	A	B	C
WITH PRESCRIBED TRACK	ft	1080 (644)	1240 (804)
MNM VISIBILITY	m	1900	2800

	IB981	IB982	IB983
CAT A, B	48°08'41,9"N 017°15'05,9"E	48°08'40,8"N 017°13'34,2"E	48°07'49,7"N 017°12'20,7"E
	11,9 DME JAN R-255 JAN	13,0 DME JAN R-256 JAN	13,9 DME JAN R-253 JAN
CAT C	48°08'21,1"N 017°15'38,2"E	48°08'19,7"N 017°13'45,4"E	48°07'24,5"N 017°12'25,9"E
	11,7 DME JAN R-253 JAN	12,9 DME JAN R-255 JAN	14,0 DME JAN R-251 JAN

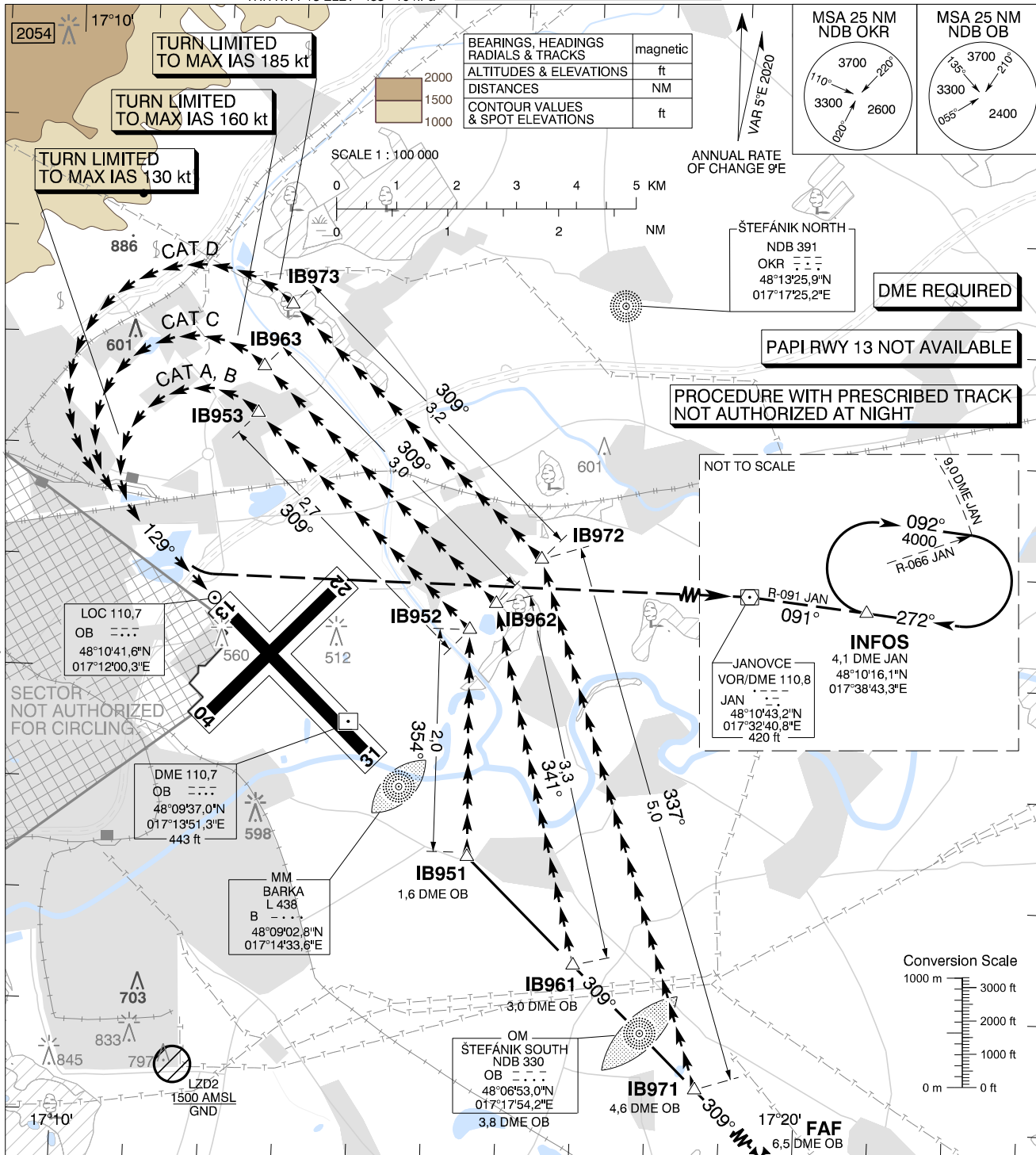
CHANGES: MAG VAR; MSA; MISSED APPROACH; HOLDING

**CIRCLING
APPROACH
CHART**

TRANSITION ALTITUDE
10 000 ft
AD ELEV 436 - 16 hPa
THR RWY 13 ELEV 433 - 16 hPa

ŠTEFÁNIK RADAR 134,925 (118,975)
ŠTEFÁNIK TOWER 118,300 (118,700)
ŠTEFÁNIK ATIS ARRIVAL 133,880

BRATISLAVA/M. R. ŠTEFÁNIK (LZIB)
RWY 31 → 13
ACFT CAT A/B/C/D



MISSED APPROACH

Proceed with LEFT turn to VOR JAN, intercept R-091 VOR JAN (track 091°) to join the holding at INFOS (R-091 VOR JAN / 4,1 DME JAN) climbing to 4 000 AMSL. MAX IAS as prescribed for relevant ACFT CAT until established on track to VOR JAN.

WARNING

In case of missed approach before leaving final approach track, follow instrument missed approach procedure for RWY 31.

PROCEDURE

Execute a published instrument approach procedure to circling OCA(H) for relevant ACFT CAT, proceed VISUALLY approximately onto tracks and distances given on the chart above.

OCA (OCH)		A	B	C	D
WITHOUT PRESCRIBED TRACK	ft	900 (464)	1000 (564)	1970 (1534)	2450 (2014)
WITH PRESCRIBED TRACK	ft	930 (494)		1350 (914)	1880 (1444)
MNM VISIBILITY	m	1900	2800	3700	4600

	IB951	IB952	IB953
CAT A, B	48°08'26,1"N 017°15'30,4"E	48°10'28,7"N 017°15'27,1"E	48°12'22,3"N 017°12'30,9"E
	11,7 DME JAN R-254 JAN	11,5 DME JAN R-264 JAN	13,6 DME JAN R-272 JAN
CAT C	48°07'29,1"N 017°16'58,6"E	48°10'43,2"N 017°15'47,9"E	48°12'47,6"N 017°12'34,7"E
	11,0 DME JAN R-248 JAN	11,3 DME JAN R-265 JAN	13,6 DME JAN R-274 JAN
CAT D	48°06'23,8"N 017°18'39,8"E	48°11'07,9"N 017°16'23,5"E	48°13'21,4"N 017°12'56,2"E
	10,3 DME JAN R-240 JAN	10,9 DME JAN R-267 JAN	13,5 DME JAN R-277 JAN

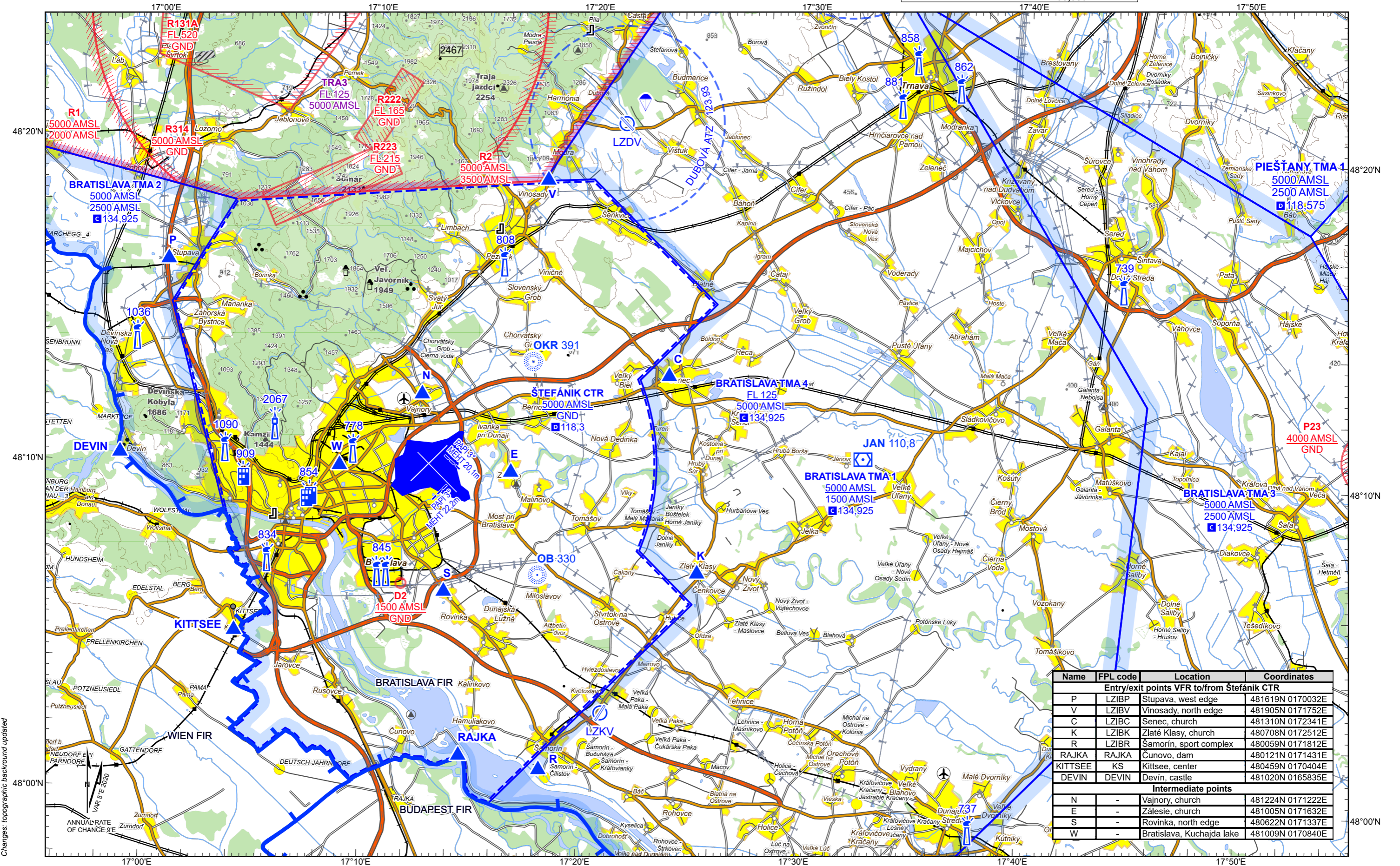
CHANGES: MAG VAR; MSA; MISSED APPROACH; HOLDING

VISUAL APPROACH CHART - ICAO

ARP 48°10'12"N 017°12'46"E
AD ELEV 436 ft

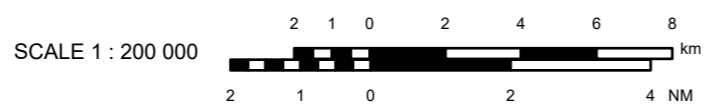
ŠTEFÁNIK RADAR 134,925 (118,975)
ŠTEFÁNIK TOWER 118,300 (118,700)
ŠTEFÁNIK ATIS ARRIVAL 133,880

BRATISLAVA/M. R. Štefánik

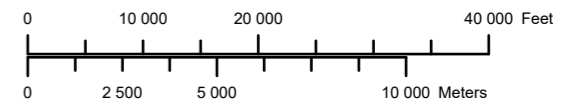


Changes: topographic background updated

BEARINGS: magnetic
ALTITUDES & ELEVATIONS: ft
CONTOUR VALUES & SPOT ELEVATIONS: ft

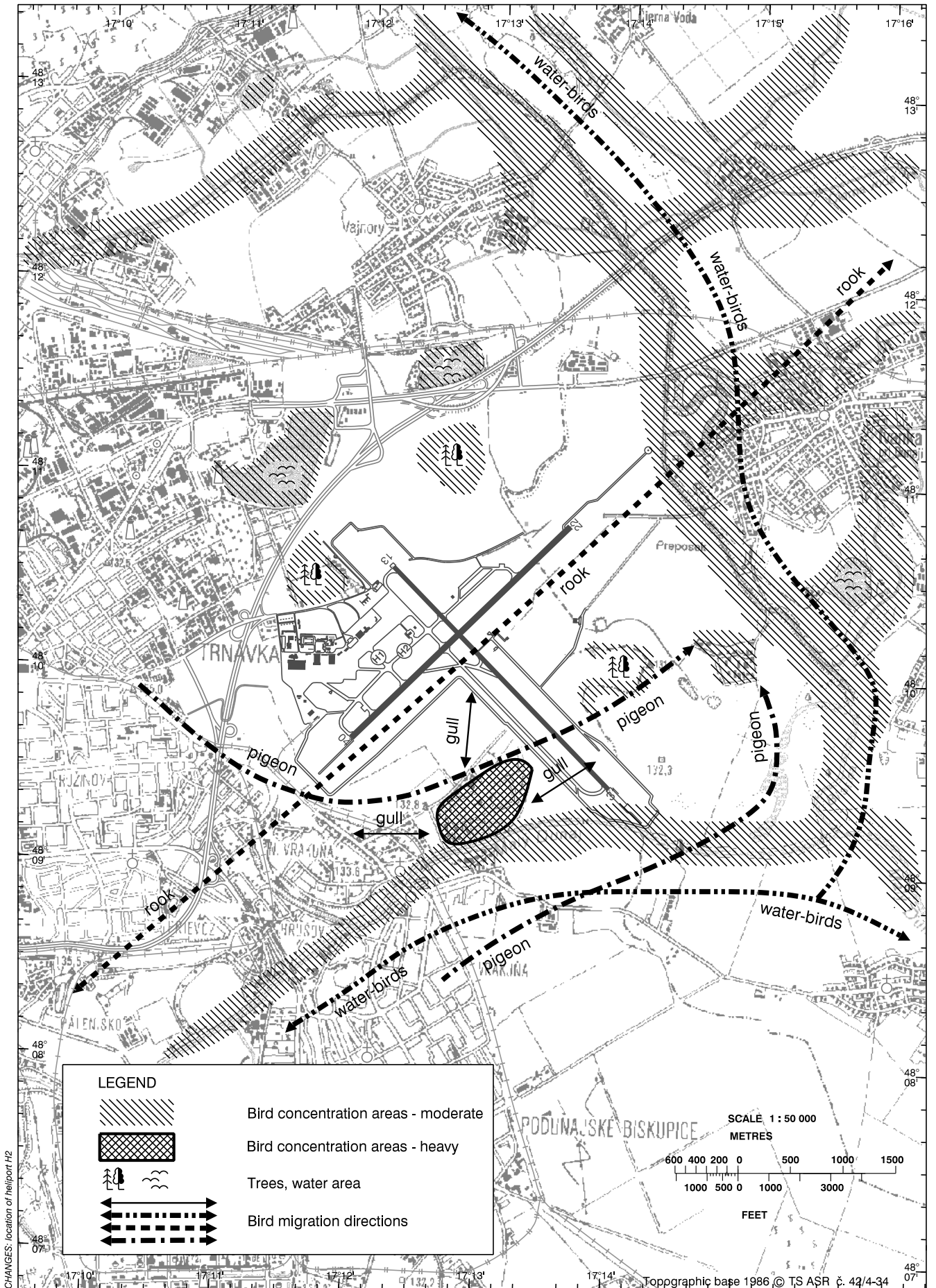


CONVERSION SCALE
for HEIGHTS or ELEVATIONS



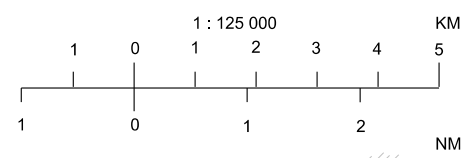
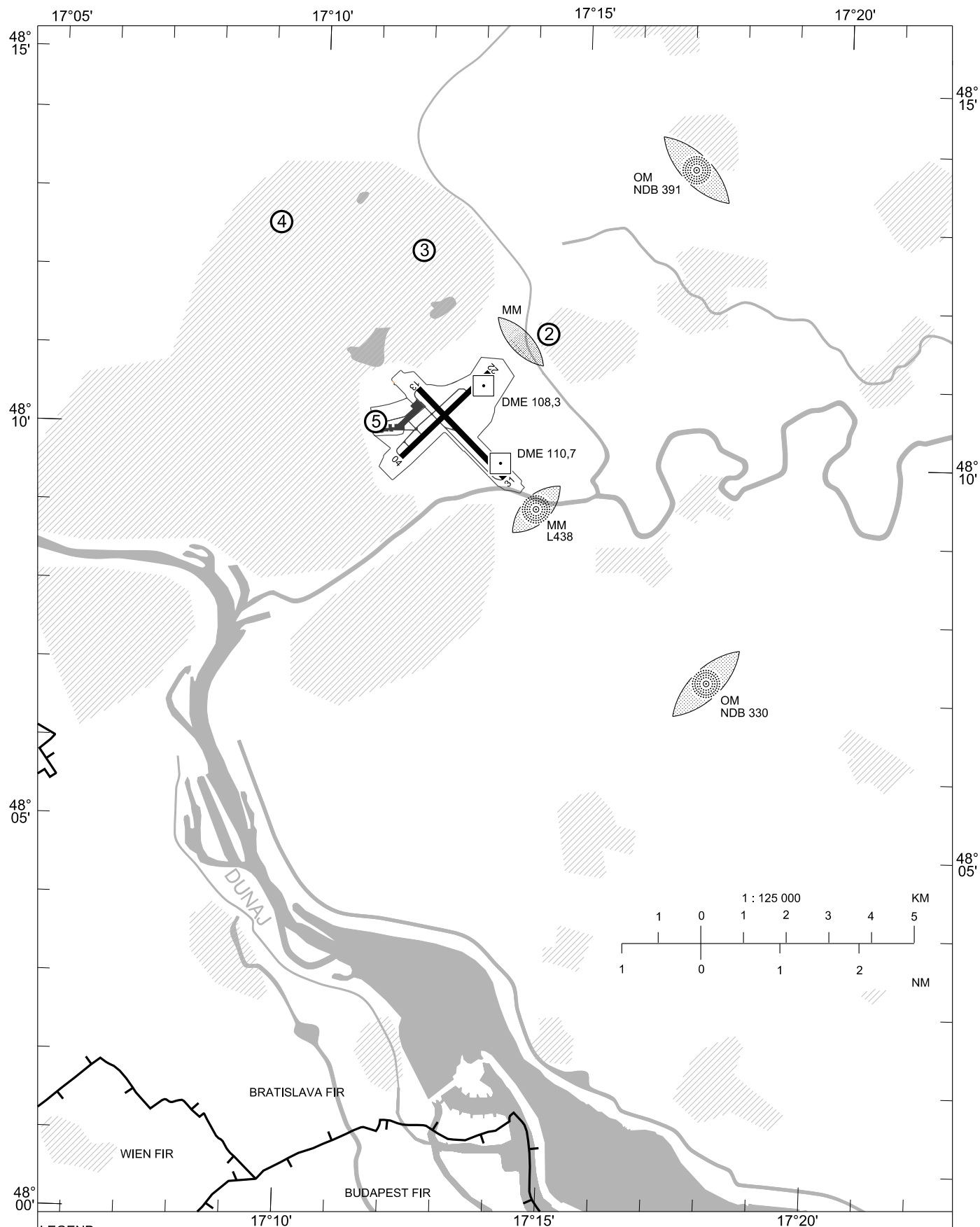
BIRD CONCENTRATIONS

BRATISLAVA/M. R. Štefánik



NOISE MONITORING SITES CHART

BRATISLAVA/M. R. Štefánik



CHANGES: page number

LEGEND

	Noise monitoring site		DME
	Water area		MKR
	NDB		Build-up areas

Noise monitoring sites coordinates

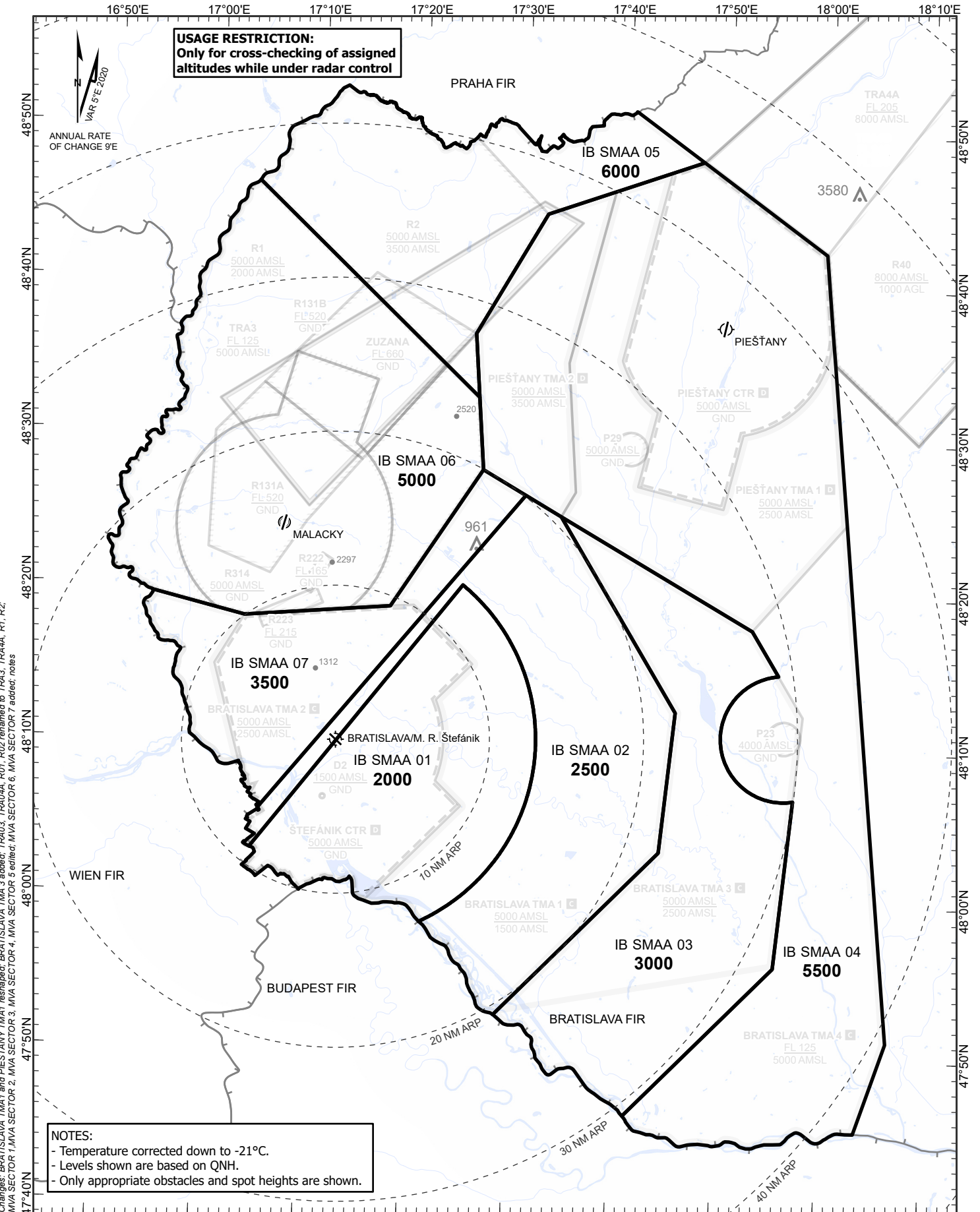
Number	Latitude	Longitude
2	48°11'17"N	017°14'42"E
3	48°12'18"N	017°12'16"E
4	48°12'37"N	017°09'32"E
5	48°10'06"N	017°11'27"E

ATC SURVEILLANCE
MINIMUM ALTITUDE
CHART - ICAO

TRANSITION ALTITUDE
10 000 ft
AD ELEV 436 ft

ŠTEFÁNIK RADAR	134,925 (118,975)
ŠTEFÁNIK TOWER	118,300 (118,700)
ŠTEFÁNIK ATIS ARRIVAL	133,880

BRATISLAVA/M. R. ŠTEFÁNIK (LZIB)



USAGE RESTRICTION:
Only for cross-checking of assigned altitudes while under radar control

ANNUAL RATE OF CHANGE 9'E

NOTES:
- Temperature corrected down to -21°C.
- Levels shown are based on QNH.
- Only appropriate obstacles and spot heights are shown.

Changes: BRATISLAVA TMA1 and PIEŠŤANY TMA1 respaced; BRATISLAVA TMA3 added; TRA03, TRA04A, R01, R02 renamed to TRA3, TRA4A, R1, R2; MVA SECTOR 1, MVA SECTOR 2, MVA SECTOR 3, MVA SECTOR 4, MVA SECTOR 5 edited; MVA SECTOR 6, MVA SECTOR 7 added; notes

ALTITUDES & ELEVATIONS: ft
SPOT ELEVATIONS: ft

SCALE 1 : 600 000
4 2 0 4 8 12 km
2 1 0 2 4 NM

IB SMAA 01 MNM ALT 2000 ft AMSL (ID: LZSLZIB001)	
48°20'28"N	017°24'42"E
circular arc 13 NM around LZIB ARP (48°10'12"N, 017°12'46"E) to	
47°58'33"N	017°21'21"E
along state boundary to	
48°03'06"N	017°04'43"E
48°20'28"N	017°24'42"E

IB SMAA 02 MNM ALT 2500 ft AMSL (ID: LZSLZIB002)	
48°26'24"N	017°30'35"E
48°25'04"N	017°34'05"E
48°12'31"N	017°45'40"E
48°03'24"N	017°44'21"E
47°52'39"N	017°28'47"E
along state boundary to	
47°58'33"N	017°21'21"E
circular arc 13 NM around LZIB ARP (48°10'12"N, 017°12'46"E) to	
48°20'28"N	017°24'42"E
48°03'06"N	017°04'43"E
along state boundary to	
48°05'39"N	017°05'25"E
48°26'24"N	017°30'35"E

IB SMAA 03 MNM ALT 3000 ft AMSL (ID: LZSLZIB003)	
48°25'04"N	017°34'05"E
48°17'55"N	017°52'59"E
48°15'02"N	017°55'38"E
circular arc 4.1 NM around LZP23 centre point (48°10'57"N, 017°56'14"E) to	
48°06'55"N	017°57'15"E
47°56'02"N	017°55'39"E
47°46'17"N	017°41'29"E
along state boundary to	
47°52'39"N	017°28'47"E
48°03'24"N	017°44'21"E
48°12'31"N	017°45'40"E
48°25'04"N	017°34'05"E

IB SMAA 04 MNM ALT 5500 ft AMSL (ID: LZSLZIB004)	
48°48'17"N	017°47'16"E
48°42'25"N	017°59'31"E
48°37'12"N	018°00'15"E
48°35'17"N	018°00'32"E
48°24'52"N	018°02'00"E
48°17'25"N	018°03'02"E
47°51'16"N	018°06'39"E
47°45'24"N	018°03'43"E
along state boundary to	
47°46'17"N	017°41'29"E
47°56'02"N	017°55'39"E
48°06'55"N	017°57'15"E
circular arc 4.1 NM around LZP23 centre point (48°10'57"N, 017°56'14"E) to	
48°15'02"N	017°55'38"E
48°17'55"N	017°52'59"E
48°25'04"N	017°34'05"E
48°26'24"N	017°30'35"E
48°27'59"N	017°26'22"E
48°32'41"N	017°25'48"E
48°36'49"N	017°25'19"E
48°44'42"N	017°32'03"E
48°48'17"N	017°47'16"E

IB SMAA 05 MNM ALT 6000 ft AMSL (ID: LZSLZIB005)	
48°51'28"N	017°40'34"E
48°48'17"N	017°47'16"E
48°44'42"N	017°32'03"E
48°36'49"N	017°25'19"E
48°32'41"N	017°25'48"E
48°46'22"N	017°03'44"E
along state boundary to	
48°51'28"N	017°40'34"E

IB SMAA 06 MNM ALT 5000 ft AMSL (ID: LZSLZIB006)	
48°46'22"N	017°03'44"E
48°32'41"N	017°25'48"E
48°27'59"N	017°26'22"E
48°18'59"N	017°17'41"E
48°18'45"N	017°13'43"E
48°18'08"N	017°03'33"E
48°18'33"N	017°00'53"E
48°19'33"N	016°54'32"E
along state boundary to	
48°46'22"N	017°03'44"E

IB SMAA 07	
MNM ALT 3500 ft AMSL	
(ID: LZSLZIB007)	
48°27'59"N	017°26'22"E
48°26'24"N	017°30'35"E
48°05'39"N	017°05'25"E
along state boundary to	
48°19'33"N	016°54'32"E
48°18'33"N	017°00'53"E
48°18'08"N	017°03'33"E
48°18'45"N	017°13'43"E
48°18'59"N	017°17'41"E
48°27'59"N	017°26'22"E